

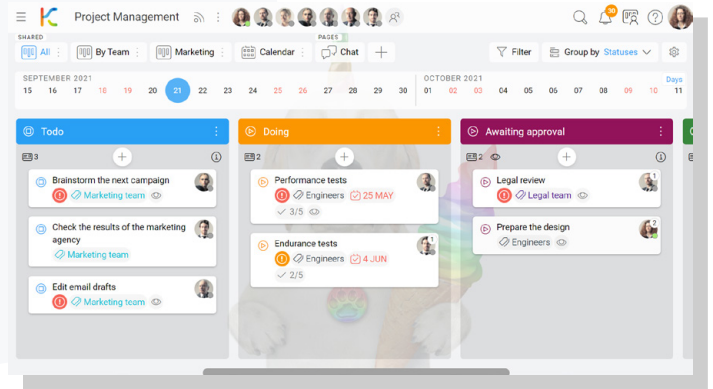
# KanBo Enterprise-Class Hybrid Environment

Getting the best of two worlds: on-premises and cloud.



# What is KanBo

Initially launched in 2012, KanBo is a versatile work coordination and business process management software especially designed for Self-Organizing teams to give people more time for the work that matters most and reduce the “work about work”.



KanBo uses a powerful technological stack of Microsoft and integrates natively with a variety of products including SharePoint, Teams, Exchange, Office, Active Directory, and more.

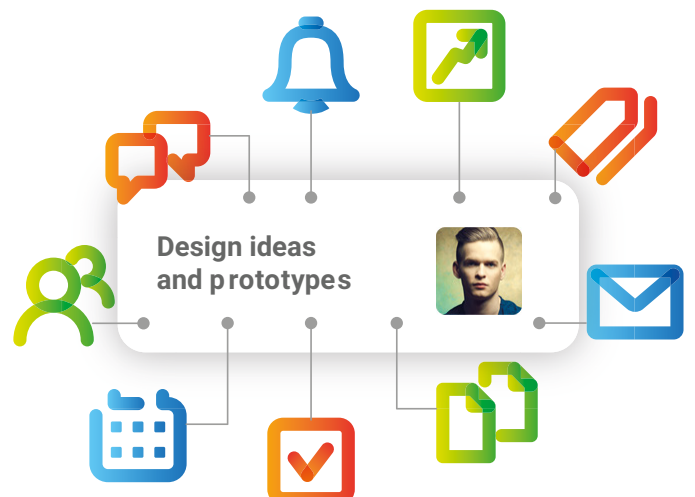
KanBo’s advanced real-time visualization of work makes work management highly engaging and efficient. It allows organizations to get real-time updates and see potential roadblocks before they occur and drill down to individual tasks or zoom out for a holistic view of everything in the portfolio. It is also a powerful and versatile communication and collaboration platform that serves as a teamwork hub by combining chat, meetings, file storage (accessible securely through OneDrive from everywhere), and integration with many other apps.

The modern workforce is more mobile and remote than ever, working in different places, on different devices, and in different time zones. KanBo is the best platform to support this new era of remote work and collaboration for enterprise-class organizations.

**FOR EXECUTIVES:** KanBo delivers comprehensive top-down visibility into projects, portfolios, KPIs, and initiatives underway through a single-pane of glass. KanBo effortlessly enables being in the know, based on the most recent information available. It is an all-in-one application integrated into your secure infrastructure.

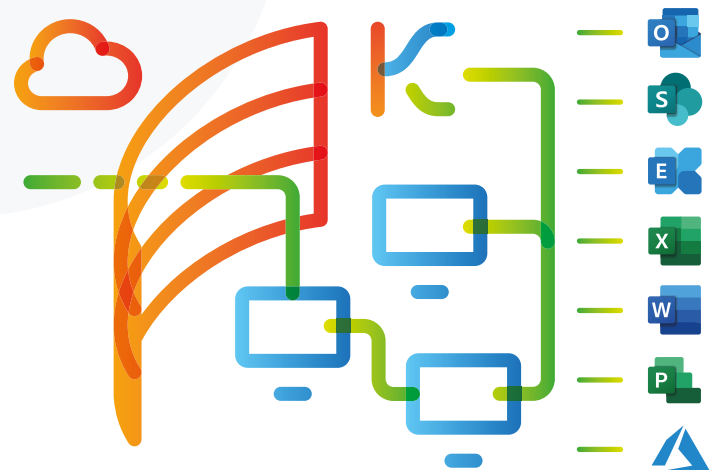
**FOR MANAGERS:** The flexibility of KanBo allows them to track tasks, deadlines, files and conversations in one place. KanBo helps them reduce the level of interruptions by personalizing their notifications to what matters now. It enables them to track progress against the overall timeline, identify and act on discrepancies immediately.

**FOR INFORMATION WORKERS:** KanBo focuses on work and makes work more social. When content, documents, conversations, and colleagues are combined in the context of cards, workloads can be managed and completed more quickly and comprehensively. Following topics, lists, cards, and boards to get information on what you care about the most, in real-time - that’s what KanBo is all about!



# What is a KanBo Hybrid Environment?

KanBo Hybrid Environment is an enterprise-tailored platform where the customer has access to two KanBo instances – one is installed on an infrastructure hosted by the customer themselves while the second is hosted on the Microsoft Office 365/Azure infrastructure that also belongs to the customer. The Active Directories of both environments are synchronized in order to provide a seamless single sign-on experience to the employees.



## Reasons for a KanBo Hybrid Environment

For many organizations, KanBo Hybrid Environment implementation has become increasingly crucial owing to the following reasons:

- High level of customization for customer's SharePoint
- High-level integration of customer's SharePoint with other On-Premises systems
- Legal and compliance concerns require the data to remain in a certain geographical area such as a particular state or a province
- The customer started with on-premises but has created lots of Boards and SharePoint content – the migration to the cloud is economically not feasible – the Office 365 environment starts in parallel from scratch.



# How does the KanBo Hybrid Environment work?

The on-premises Microsoft environment is connected to the customer's Office 365 tenant using Active Directory Sync to ensure a single-sign-on experience for employees.

In most cases, the Exchange Server is already in the Office 365 cloud (online). There are two KanBo instances in place. One instance is installed on an IIS Server as a SharePoint Provider Hosted App on-premises and uses dedicated APIs of all on-premises products from Microsoft stack (SharePoint, Exchange, SQL, and Active Directory) to interact with them.

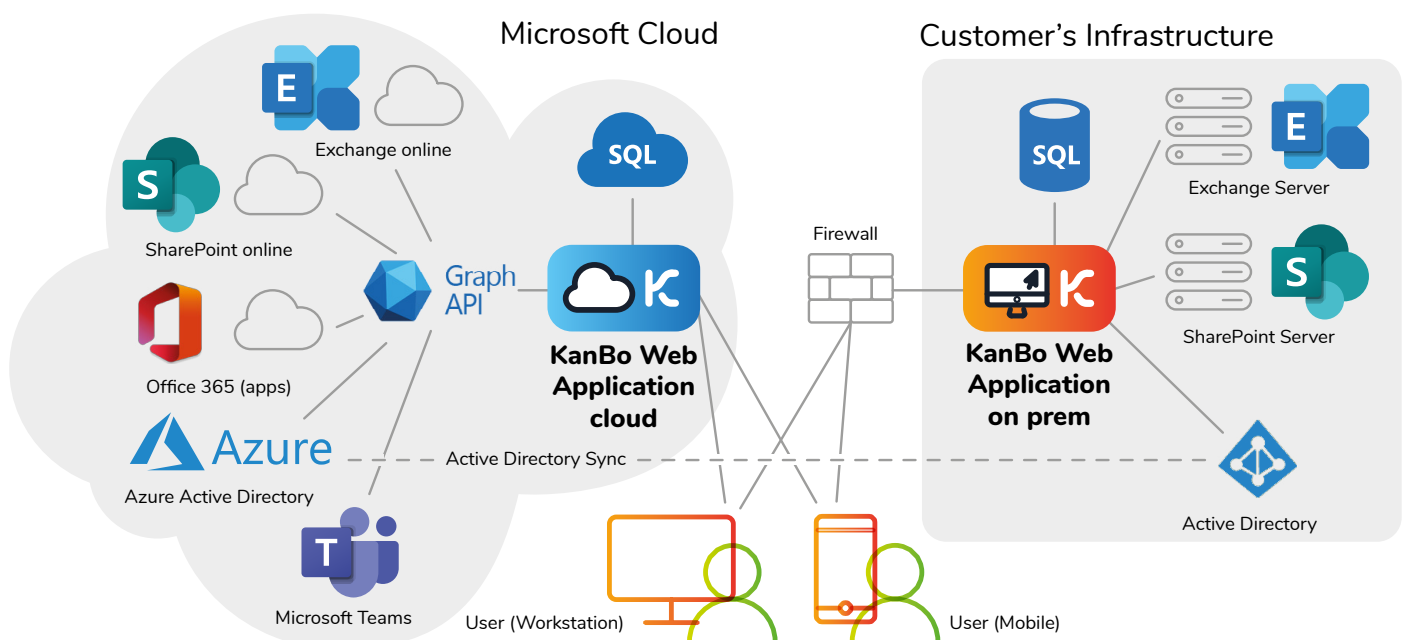
At the same time, a second KanBo instance is installed on Azure as an Enterprise Azure Active Directory Application. It runs as an Azure Web Application and uses the Office Graph API to communicate

and interact with the entire Office 365 ecosystem. Since the users are relying on a synchronized Active Directory, both KanBo environments are seamlessly accessible without any additional signing in for users. Users can decide where to create Boards or where to create cards depending on their use case, legal conditions, and internal policies.

There is a major difference in terms of how KanBo operates behind the scenes on-premises and in a cloud environment due to substantial differences in Microsoft's architecture of both environments. On-premises, each time a KanBo Board is created, KanBo creates a SharePoint Subsite using a predefined SharePoint Site Template (Teams Site Template) and relies on the SharePoint mechanics for deep integration like syncing of user permissions and storing documents. In the Office 365 environment, KanBo uses the same mechanics as MS Teams, SharePoint Site Collection, Yammer, etc. as it creates an Office 365 Group in Azure

Active Directory which creates the underlying building blocks for deep integration aligned with Microsoft's current architecture, for KanBo, i.e. the Document Library to store KanBo Documents (BTW: the same one that i.e. MS Teams is using for its documents).

None of these differences is visible to KanBo users as in both environments the user interface, the look and feel are exactly the same, which is another unique feature of KanBo because users do not have to learn a new user interface of a software after transitioning to the KanBo Cloud Environment.



# How is the look and feel of KanBo Hybrid Environment for the end-user?

Basically, there are two different KanBo environments with two different URLs. Depending on the department or the role inside of the organization, the employee will choose her/his “main” environment.

In most cases, it will be KanBo in the Cloud as it is integrated with MS Teams and Outlook since both are available only in the Cloud (assuming the Exchange Server is already in the cloud). Employees can create their own working environments using the KanBo Board Collections feature and organize the Boards they need.

Board Collections can reference Boards from the “main”, as well as Boards from remote KanBo environments/instances as linked Boards. Therefore, employees can access Boards from both environments with just one click.



The KanBo notifications can be configured to be sent using email and/or MS Teams native notifications (works also on mobile devices) on both environments to ensure a unified user experience across KanBo Hybrid Environment.

KanBo is being developed in a way that in its core it always provides the same set of features for both environments: on-premises or cloud – it is actually the same software – only the way it is deployed differs due to the capabilities of the environment it is installed on.



# KanBo Hybrid Environment as a migration strategy

For customers who started with KanBo on-premises and ended up creating thousands of KanBo Boards and millions of Documents, a 1:1 migration of KanBo including the underlying SharePoint structure of Site Collections to Office 365 environment might be economically not feasible.

This is especially true if there is no proper governance process in place that would automatically take care of retention of discontinued KanBo Boards and SharePoint Site Collections present in the on-premises environment. It results in consuming considerable resources moving “dead” data.

In such cases, it might make sense to create a second, fresh KanBo environment in the cloud and not migrate any Boards nor Documents initially from the on-premises KanBo environment – basically to create a KanBo Hybrid Environment. The employees would start creating new Boards in the cloud environment as Office 365 is the new “state of the art” and contains MS Teams, which KanBo seamlessly integrates into.

Of course, all KanBo Boards that will be holding confidential information will be created in the on-premises environment according to the organization’s policies. As there are probably only few Boards that will contain confidential information, almost every new Board will be created within the KanBo cloud environment.

The “old” KanBo Boards along with their content are still available to employees as the on-premises environment stays fully operational. As some Boards in the on-premises environment will still be used extensively and if they do not contain any confidential information, some teams might want them to be a part of the new cloud environment in order to take advantage of the full scope of cloud possibilities provided by the KanBo cloud environment. In that case, the Board Owners can migrate these Boards in a self-service manner using the Download Board as File Template between both KanBo environments.

.....

**From our experience, only 5% of all Boards are migrated to the second environment – the rest stays and expires over time.**

.....

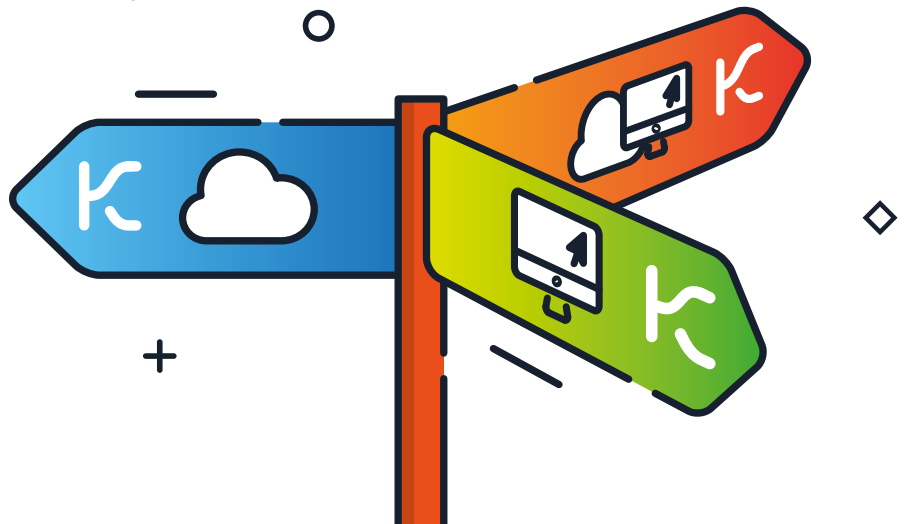
Another feasible way that’s used by some customers is to prepare a list of Boards upfront to be migrated by their IT department to the KanBo cloud environment.



Using KanBo Board Collections, employees can organize their workspaces consisting of Boards from both environments making the transition and coexistence as seamless as possible to them.

# What are the considerations when planning a KanBo Hybrid Environment?

- The KanBo Outlook App that allows users to create new cards or attach emails to existing cards in KanBo including attachments must be configured to point to the Exchange in the cloud. In consequence, users will only be able to see Boards and Cards from the KanBo cloud environment, not those from the on-premises environment when converting Outlook emails into KanBo cards.
- The Power Automate, Azure Logic Apps, seamless Planner Import and the Microsoft Teams integration works only with KanBo Boards and Cards from the KanBo cloud environment as these mentioned Microsoft products are “cloud-born”.
- Nintex Workflow integration will work only for the on-premises KanBo environment.
- Microsoft Power BI, Tableau and ServiceNow integration works for both KanBo environments simultaneously.
- Co-authoring and online editing of documents in the browser work for both KanBo environments simultaneously.
- Inviting external users (“Guests”) only works for the KanBo cloud environment as it uses the same underlying Office 365 Groups as other Microsoft cloud tools like MS Teams, SharePoint online or Yammer.
- KanBo Email Notifications will work on both KanBo environments simultaneously.
- Sending emails to KanBo Boards or KanBo Cards and sending comments as emails from KanBo Cards to non-Board Members work for both KanBo environments simultaneously.



# Conclusion

To finish off, let's review the benefits of hybrid!

Whether you want to make a move to the Microsoft cloud environment gradually, you have tons of content (some of it not used anymore) and moving it at once is impossible, have regulatory restrictions, or have highly customized SharePoint environments; an all-in approach may not be feasible for migrating to the Microsoft cloud world.

Fortunately, with the use of a KanBo Hybrid Environment, businesses can comply with Regulation Standards and internal security policies by storing sensitive data in their KanBo on-premises farms and saving the rest to their KanBo online tenant.

Over time, only the relevant content will be selectively moved by the users to the KanBo cloud environment saving a lot of resources and stress that often comes with a major migration project while allowing everyone to work free of any disruptions.

For more information,  
please visit [www.kanboapp.com](http://www.kanboapp.com)  
or contact us at [support@kanboapp.com](mailto:support@kanboapp.com).

If you would like to see KanBo in action,  
please book a demonstration [here](#).